

**Non-lead Ammo Switching Tips:**



Not all ammo shoots the same.

**For the best match with your rifle:**

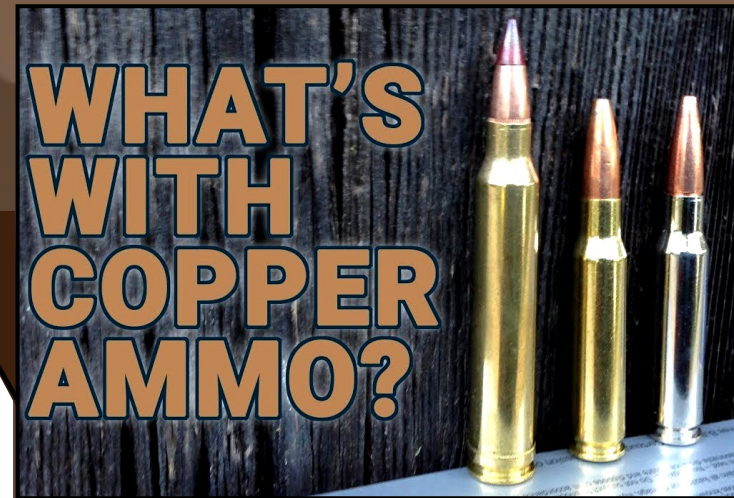
- Choose a 15-20% lighter bullet. Solid copper bullets expand quick and hit as hard as lead, but have a thinner profile. What's lost in grain weight when switching is made up for in velocity and weight retention, resulting in equal impact and better penetration than lead.
- Try different non-lead brands. Every firearm handles cartridges differently. Try different brands of non-lead ammo on paper targets to find which kind gives you the best grouping to sight in for your hunt.

“Earth and myself are of one mind. The measure of the land and the measure of our bodies are the same.” - hinmatóowyahtq'it (Chief Joseph)

**tamáalwit tukeliikin**



**'eqiixnu' wéetesne**



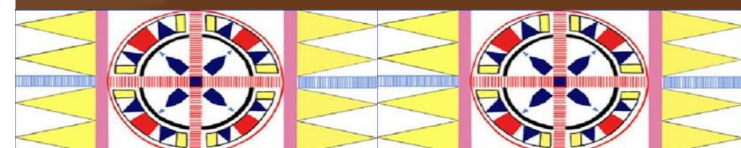
Ammunition use guidelines for hapát'is- to protect Mother Earth and our families...



This brochure is brought to our community by efforts from the NPT Fish and Wildlife Commission, Cultural Resource Program and Wildlife Division with funding from the Administration for Native Americans.

Haven't tried non-lead ammo yet? Call the Wildlife Division for options: 208-843-2162

For a list of non-lead ammo brands go to: [www.tinyurl.com/non-leadbrands](http://www.tinyurl.com/non-leadbrands)



How many times should a bullet kill after it's fired?



For more information go to:

- ✦ [www.tinyurl.com/nptstewardship](http://www.tinyurl.com/nptstewardship)
- ✦ [www.huntingwithnonlead.org](http://www.huntingwithnonlead.org)
- ✦ [www.tinyurl.com/OZHunting](http://www.tinyurl.com/OZHunting)



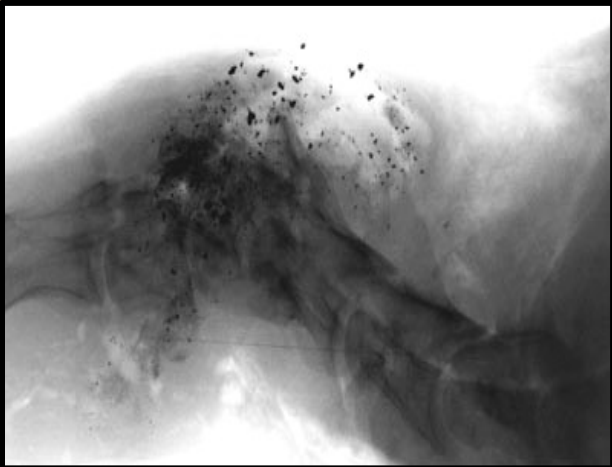
Spent non-lead (right) is superior to lead (left) in weight retention and penetration.

Secondary poisoning in the food web is a wide-spread problem when hunting with conventional lead-core bullets...

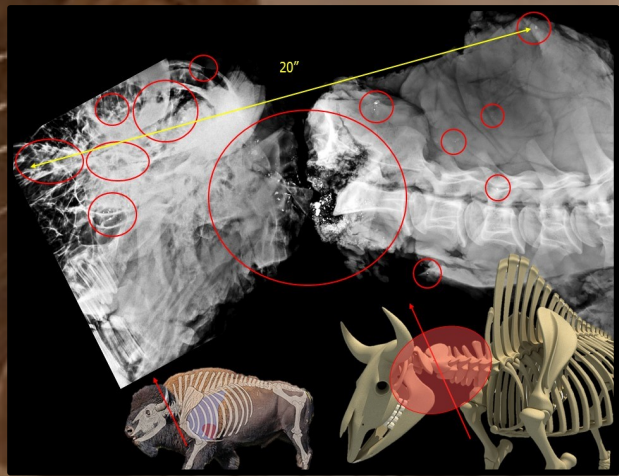
Ingested spent lead ammunition in gut piles, or other animal parts, can kill or permanently harm scavenging wildlife.



One Shot, One Kill: **harvesting your food with non-lead ammo ensures a safe & healthy meal for all members of our community.**



Deer neck shot from standard soft-point, lead-core, bullet indicating hundreds of lead fragments.



Buffalo neck shot with a Remington Core Lokt 30-06 180 gr. bullet, indicating a 20" spread of lead fragments (circled in red).



Shoot clean; providing lead-free food sources for the next generation helps protect our families and heal our lands.